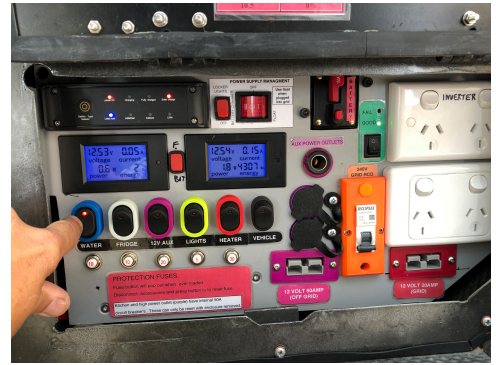


Hot water service.

Your camper has a hot water system built in. It can work with mains pressure water or tank water via a pump.

To use hot water system.

Switch on water pump on switch board (blue)

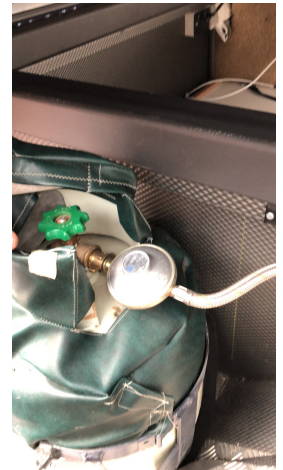


Switch on water heater switch on the front of heater.

Gas must be turned on at cylinder



Turn on water supply to water heater valve.

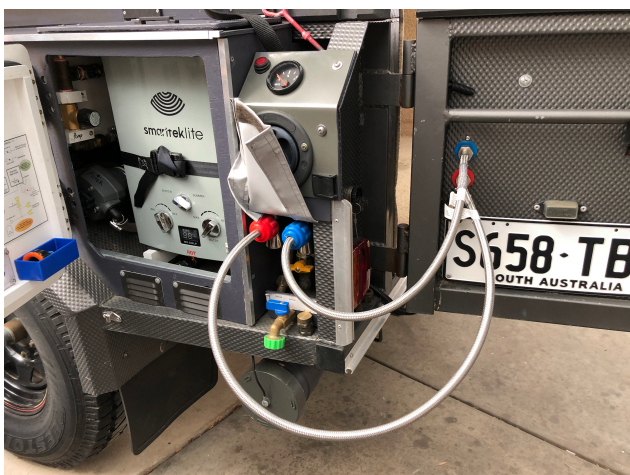


Turn on gas to the water heater, Yellow valve under supply tap cover. The yellow handle aligns with pipe as in photo. Pull grey cover from bottom up.

Remove dust covers from supply taps.

Remove dust covers from tailgate kitchen in plumbing.

Connect feed Flexi hosed from supply taps to tail gate kitchen fittings. Red to red but to blue.



Open heater locker flue, release the two latched inside under the flue door. Angle up and use securing strap to hold flue door open.

This is an important step, the exhaust out of the heater are hot!!

Turn on supply taps hot and cold, this will allow water to flow to sink.

Connect the drain pipe to the drain tail gate pipe.

Refer to the Smarttek manual, water temperature can be adjusted. Note there are two D size batteries inside the unit. These can be removed as in the instruction book. Loosen the securing belt around the heater and slide the heater up while tilting the top forward. This will allow enough room to drop the batteries for replacement.

